

NORTH CAROLINA RAILROAD CO.
4.35.E.1
9864-75-5143
PB 94/116

NORFOLK SOUTHERN RAILWAY

ENO STREET

DIMMOCKS MILL RD.

100' R.R. R/W

NORFOLK SOUTHERN RAILWAY

100' R.R. R/W

100' R.R. R/W

100' R.R. R/W

100' R.R. R/W

100' R.R. R/W

100' R.R. R/W

100' R.R. R/W

100' R.R. R/W

100' R.R. R/W

100' R.R. R/W

100' R.R. R/W

100' R.R. R/W

100' R.R. R/W

100' R.R. R/W

100' R.R. R/W

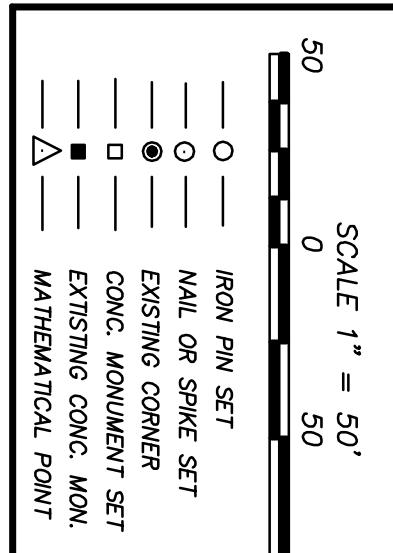
100' R.R. R/W

100' R.R. R/W

100' R.R. R/W

100' R.R. R/W

100' R.R. R/W



SCALE 1" = 50'
0 50 100

PROPERTY SURVEYED FOR
GOLD PARK

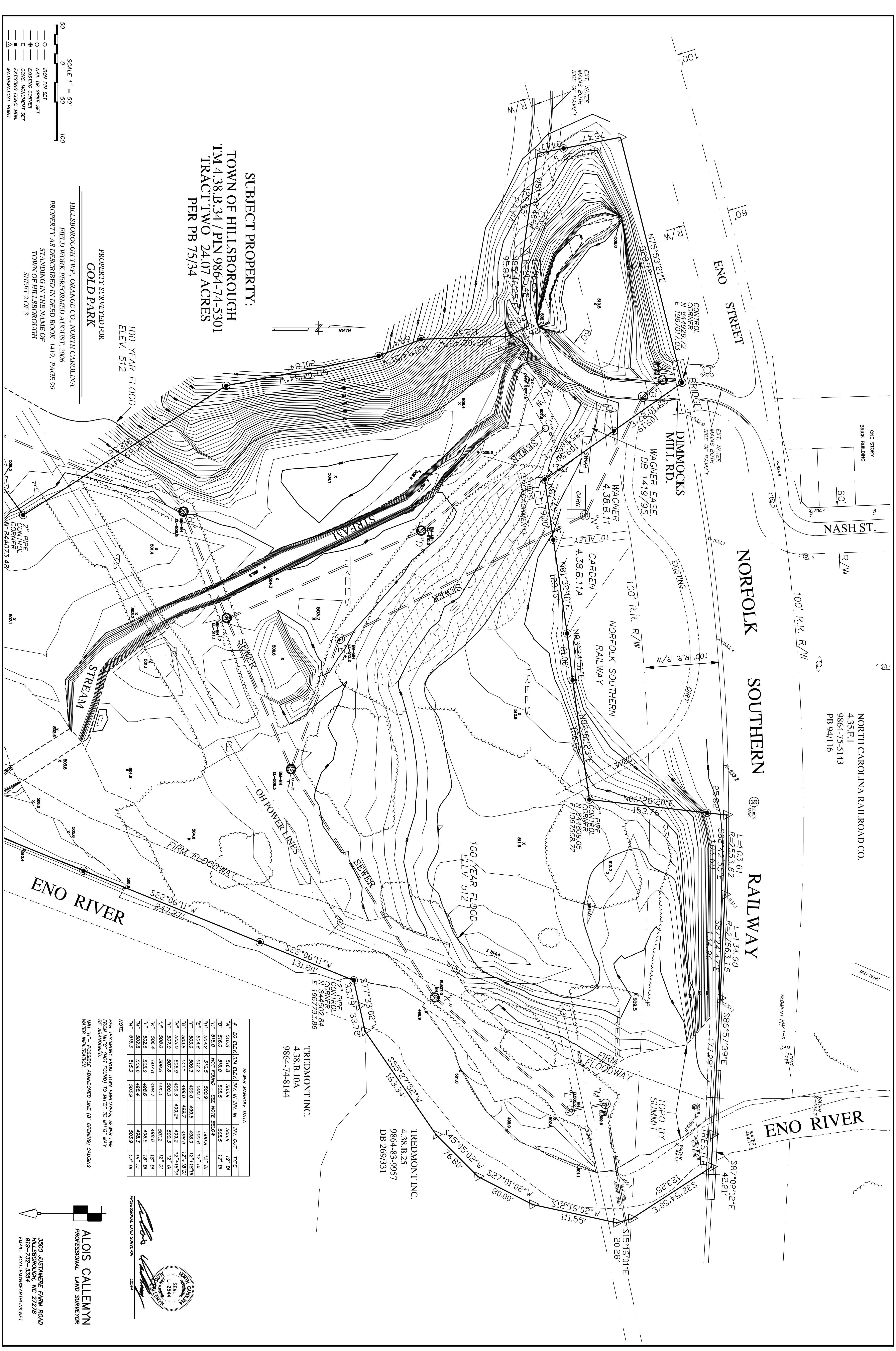
HILLSBOROUGH TWP., ORANGE CO., NORTH CAROLINA
FIELD WORK PERFORMED AUGUST, 2006
PROPERTY AS DESCRIBED IN DEED BOOK 1419, PAGE 96
STANDING IN THE NAME OF
TOWN OF HILLSBOROUGH
SHEET 2 OF 3

SUBJECT PROPERTY:
TOWN OF HILLSBOROUGH
TM 4.38.B.34 / PIN 9864-74-5301
TRACT TWO 24.07 ACRES
PER PB 75/34

100 YEAR FLOOD
ELEV. 512

ENO RIVER

ENO RIVER



#	LEG	ELEV	RAW ELEV	INV. IN	INV. IN	INV. OUT	TYPE
"A"	516.0	516.0	505.9	505.9	12" DI		
"B"	516.0	516.0	505.5	505.5	12" DI		
"C"	515.0	NOT FOUND	-	-	SEE NOTE BELOW		
"D"	504.2	510.5	500.9	500.8	12" DI		
"E"	504.6	512.2	500.7	500.6	12" DI		
"F"	503.9	509.3	499.0	499.5	12" x 18" DI		
"G"	503.8	511.1	499.0	499.7	12" x 18" DI		
"H"	502.0	507.6	499.2	499.2	12" x 18" DI		
"I"	508.0	508.6	501.3	500.3	12" DI		
"J"	508.4	507.0	498.7	498.6	18" DI		
"K"	502.8	503.2	498.2	498.3	18" DI		
"L"	502.8	503.6	498.5	498.3	18" DI		
"M"	515.3	503.9	503.9	503.9	12" DI		

NOTE:
PER TESTIMONY FROM TOWN EMPLOYEES, SEWER LINE FROM WH" C" (NOT FOUND) TO WH" D" TO WH" E" MAY BE ABANDONED.
WH" L" - POSSIBLE ABANDONED LINE (8" OPENING) CAUSING WATER INFILTRATION.

SEWER MANHOLE DATA

TREDMONT INC.
4.38.B.10A
9864-74-81144

TREDMONT INC.
4.38.B.25
9864-83-9957
DB 269/331

ALLOIS CALLEMYN
PROFESSIONAL LAND SURVEYOR

3500 JUSTAMERE FARM ROAD
HILLSBOROUGH, NC 27778
919-732-3354
EMAIL: ALCALLEM@ARTHLINK.NET